

# Crisis and imagination



11th EASA Biennial Conference



Maynooth, Ireland

24-27th August 2010

**EASA2010**

# Timetable

Time	Tue 24 Aug	Wed 25 Aug	Thu 26 Aug	Fri 27 Aug	
09.00		Plenary A	Plenary B	Plenary C	09.00
09.30					09.30
10.00					10.00
10.30					10.30
11.00					11.00
11.00		<i>Break</i>	<i>Break</i>	<i>Break</i>	11.00
11.30	Registration	Workshop session 1	Workshop session 4	Workshop session 7	11.30
12.00					12.00
12.30		12.30			
13.00		<i>Lunch</i> SA/AS Journal debate	<i>Lunch</i> Getting published  Network convenors meeting	<i>Lunch</i> Wenner-Gren Grants workshop	13.00
13.30					13.30
14.00					14.00
14.30		Workshop session 2	Workshop session 5	Workshop session 8	14.30
15.00					15.00
15.30					15.30
16.00			<i>Break</i> Pluto/Hannerz book launch	<i>Break</i>	<i>Break</i>
16.30	Welcome	Workshop session 3	Workshop session 6	Members forum/ AGM	16.30
17.00					17.00
17.30					17.30
17.30	Keynote lecture	<i>Break</i> SA/AS & Wiley-Blackwell reception	<i>Break</i> Berghahn reception  Cultural Anthropology reception	Closing ceremony	18.00
18.00					18.00
18.30	Break	Roundtable: Anthropology in University	Network meetings		18.30
19.00	Welcome reception				19.00
19.30					19.30
20.00		Network meetings	Ceili (20:30 – 23:00)	Conference banquet	20.00
20.30		20.30			
21.00		Presidential reception			21.00
21.30					21.30
21.30		Concert (21:00 – 22:45)			
22.00		Music in Mantra	Music in Mantra	Music in Mantra	22.00
22.30					22.30

## **Crisis and imagination**

European Association of Social Anthropologists 11<sup>th</sup> Biennial Conference

National University of Ireland, Maynooth

August 2010

**Conference programme and book of abstracts**

## **EASA executive committee**

Michal Buchowski, University of Poznań, President  
Manuela da Cunha, University of Minho, Vice-president  
Maria Couroucli, Université Paris Ouest–Nanterre La Défense  
Paolo Favero, University College London  
Gísli Pálsson, University of Iceland  
David Shankland, University of Bristol, Treasurer  
Dorle Dracklé, Journal Co-editor  
Thomas Fillitz, University of Vienna, Secretary

## **Scientific committee**

Michal Buchowski, Manuela da Cunha, Maria Couroucli, Steve Coleman, Dorle Dracklé, Abdullahi El-Tom, Paolo Favero, Thomas Fillitz, Pauline Garvey, Mark Maguire, Gísli Pálsson and David Shankland.

## **Local committee**

Steve Coleman, Abdullahi El-Tom, Pauline Garvey, Patty Gray, Anthony Kelly, Karen Kelly, Mark Maguire, Chandana Mathur, Tom Strong and Karolina Szmagalska-Follis.

## **NomadIT (conference organisers)**

Eli Bugler, Megan Caine, Darren Hatherley and Rohan Jackson.

## **Acknowledgements**

We would like to thank the following for their generous support of this event: Fáilte Ireland, Jamesons, Maynooth Campus Conference & Accommodation, NUIM Vice President for Research, NUIM Vice President for International Students and the Wenner-Gren Foundation. Thanks to Enda Ó Catháin and Emma O'Halloran for booking and organising the music.

## **Publishers**

The following publishers have given this event their support by either advertising in this programme or presenting a range of titles at the conference. Do please take time to browse their stalls and talk to their representatives. The publishers' stalls are located in the publishers' space in the foyer of the Humanities building behind the reception desk – ask our conference team if you cannot find them. **Berg, Berghahn, Gazelle Books, LIT Verlag – Berlin, MAXQDA, OUP, Pluto Books, Sean Kingston Publishing, Taylor & Francis, Terrain, University Library Frankfurt and Wiley Blackwell.**

## Contents

Welcome addresses	4
Practical information	6
Student guide (to Maynooth)	12
Events and meetings	29
Daily timetable	36
List of plenaries and workshops	42
Plenary, workshop and paper abstract	55
List of presenters	523
Map	inside back cover

## **Céad míle fáilte go hÉireann**

*A hundred thousand welcomes to Ireland*

On behalf of the Department of Anthropology, National University of Ireland, Maynooth, and the Irish people, I am delighted to welcome you to Ireland, the land of a hundred thousand welcomes – of culture, literature and music. Over the past two years, our local team has worked closely with the EASA Executive Committee to make this conference, *EASA 2010: Crisis and Imagination*, a great success. Our work, a formidable challenge, is nearly over. The rest of the challenge is now yours. We hope this conference will make a significant contribution to Anthropology as a discipline.

This conference is an important part of our academic duty to push forward the frontiers of the social sciences. But pushing against the frontiers of the social sciences is not an aim in itself: it is meaningless unless it engenders mutual cultural appreciation and contributes to societal prosperity and global peace and harmony.

While we are prepared to invite our delegates for challenging scientific debates throughout the conference, we equally urge them to take the opportunity to extend their stay in Ireland and to connect with the Irish people. The greeting ‘a hundred thousand welcomes’ is not a cliché. Rather, it is a genuine and accurate formula which conveys the hospitality and welcoming spirit that have made the Irish famous among all nations. We hope our delegates make time to travel around and experience the true delights of Ireland and its people, history and culture.

For better or for worse, you will be well into the conference by the time you read these words. Let me say that any success you experience is a result of the intensive collaborative efforts of many advisors, sponsors and volunteers, whose contributions are listed and recognised herein. But there will also be limitations that are entirely ours and for which we are content to remain responsible.

Lastly, we remind you that this conference is more than an academic exercise. It is an occasion to be appreciated and enjoyed.

**Go n-éirí libh!**

*Abdullahi Osman El-Tom*

Head of the Department of Anthropology  
NUI Maynooth, Ireland

## **Welcome from the EASA President**

As anthropologists, scholars, students and researchers we engage in various undertakings. Participation in conferences is one of them and although some people have doubts about the usefulness of this ritual act, we consider EASA Biennial Conferences as one of the highlights of our association's activities. Previous events were remarkable not only with regard to their general topics, but also flavour and spirit. All of them were important social gatherings during which people met and engaged in exciting intellectual events addressing important and urgent research topics and agendas. I have no doubt the same intellectual and friendly atmosphere will also be ubiquitous in Maynooth. It is a sheer coincidence that Ireland – considered a European 'economic tiger' – hosts a conference when crisis has swept all over the world. The general theme of this meeting, *Crisis and Imagination* poses a challenge for us anthropologists: how can we, with our expertise in immediate and grass-root experiences of people viewed in a transnational perspective, contribute to the analysis of reasons and structural determinants that have led to these happenings, which are devastating for many individuals, communities and countries? Our findings cannot be simply viewed as an intellectual exercise; they are at the same time a serious attempt to critically interpret these developments and identify relations of power and inequalities permeating social relations at various levels in a world around us.

We should all be thankful to the Local Committee, our colleagues from the Department of Social Anthropology at the National University of Ireland in Maynooth, for being so imaginative as to venture to organise this conference in the period of crisis. In the name of the European Association of Social Anthropologists and its Executive Committee I wish you all a fruitful conference, exciting discussions and many friendly encounters.

*Michal Buchowski*

University of Poznań, Poland

## Practical information

### Using this programme

The timetable is on the inside front cover of this book and gives the times of the plenaries, workshop sessions and other main events. To work out the timings of specific workshops, view either the *Daily timetable* which shows what is happening at any given moment, or the *List of plenaries and workshops* which also lists locations and convenors.

The map on the inside rear cover shows the North and South campuses, where the conference takes place. For a map of Maynooth town showing eateries, see the *Student guide* section.

This section and the following section – the *Student guide* – are aimed at helping you with the practicalities of being in Maynooth and Ireland this week.

The *Events and meetings* section informs you of the other activities that are going on this week, outside of the core academic programme, including receptions, music, dinners, network meetings and additional workshops.

The *Daily timetable*, the *List of plenaries and workshops* and the full set of abstracts follow, which should allow you to navigate the content of the conference.

Finally, at the end of the book there is the *List of presenters* to help you identify the workshops in which particular colleagues will present their work.

If you need any help interpreting the information in the conference book, do ask one of the conference team at the reception desk.

### Timing of workshops

While it may seem confusing, it's actually relatively simple: no workshop goes overnight (except W001) so all are concluded within the three workshop sessions of the day (two sessions on Friday). Most workshops will start with the first session of the day; there are only a handful that begin in the afternoon (IW004, W001, W006, W033, W046, W062, W069, W125). We are using between 35 and 43 rooms, so any one workshop is up against that number of alternatives.

### Timing of individual papers

Each 90-minute session ordinarily accommodates three papers. This can be used as a rough guide in establishing which papers will be presented when, within multi-session workshops. However, in order to cope with demand, this year we have allowed some workshops to run at four papers to a session. Add to this the fact that convenors have a degree of flexibility in structuring their workshops, and the fact that last minute cancellations inevitably occur, and you will understand that we simply cannot guarantee the success of panel-hopping! There is a



running order placed on the door of each room, so that convenors are able to indicate any last minute changes there.

If you are very interested to hear a particular paper but do not wish to sit through the whole workshop, we recommend you check with the convenors at the start of the workshop to find out when the paper will actually be presented.

## Venue

We are using several buildings to accommodate this conference, and these are indicated on the map on the rear inside cover. The 'core' of the conference takes place on the North campus of NUIM with some accommodation and food being on the South campus. We recommend the footbridge as the safest way to move between the two sides of the campus!

The vast majority of workshops will take place in either the John Hume building or the Arts building; the reception desk and conference organisers' (NomadIT) office are on the ground floor of the Humanities building.

Apart from the pre-existing campus signs there will be additional conference signage giving directions to all rooms and facilities. The *Events and meetings* section, *List of plenaries workshops* and *Plenary, workshop and paper abstracts* sections all indicate the locations being used. If you have any problems finding your way around, please ask a member of the conference team for assistance.

Maynooth town is only a five minute walk from the campus.

## Plenary location

The keynote and plenaries will be given in John Hume Lecture Theatre 1. However, this theatre cannot hold the 1100+ delegates, so the proceedings will be video-relayed to John Hume Lecture Theatres 2, 3 and 4 in addition, allowing all delegates to listen to and see the presenters and their presentations. The conference team will be ushering at these rooms; if Theatre 1 is full, please do make your way to one of the other three theatres. If you arrive late for the plenary please proceed to one of the relay Theatres (2, 3 or 4). Consequently the location for the plenaries is marked as theatres 1/2/3/4.

## Food

Registration includes refreshments (tea and coffee), which will be served twice daily in four locations on the North campus: the foyers of the Humanities, Arts, John Hume and Science buildings. (These are marked with an appropriate icon on the map.) If you are finding it difficult to reach the refreshments due to crowding, please try another location, just a couple of minutes' walk away – the Science building will be a good bet.

Outside of the fixed tea/coffee times, delegates can get drinks in the various cafes dotted around the campus, as well as at cafes in town. (See *Student guide*).

Those who have booked breakfast with their university accommodation will be able to eat that in Pugin Hall on the South campus. Information about that will have been included in your accommodation 'welcome pack'. Those who have not booked breakfast can make and eat breakfast in their accommodation kitchen, or visit the cafes in the town.

Pugin Hall will be serving lunches and evening meals throughout the conference. There will also be hot meals available at lunch and in the evening in the Student Union Bar (in the Student Centre) and Student Common Room. (These are marked with an appropriate icon on the map.) In addition there are various coffee/sandwich outlets dotted around the campus. Finally, you may wish to wander into the town, whose restaurants, cafes and pubs are described in the *Student guide* section of this book.

Given the numbers of delegates and the size of the various facilities, our conference team will be helping to usher at meal times to ensure you don't end up queuing for long. Please do take their advice.

### **Publishers' space, foyer of Humanities building**

The publishers' stalls are located just behind the reception desk in the foyer of the Humanities building. Delegates are invited to browse the titles and talk to the representatives of Berg, Berghahn Books, LIT-Verlag, Pluto Books, Sean Kingston Publishing, Taylor & Francis, Terrain and Wiley Blackwell.

### **Conference team**

There is a team of helpful staff, familiar with the programme, university and surrounding area, to whom you can turn when in need of assistance. Team members can be identified by their *Crisis* t-shirts and by their badges. If you cannot see a team member, please ask for help at the reception desk in the foyer of the Humanities building. All financial arrangements must be dealt with in the conference organisers' (NomadIT) office in the small seminar room to the left of the reception desk.

### **Reception desk and conference office opening hours**

The reception desk may be staffed a little longer than the conference office, however approximate hours of operation will be:

Tues: 12:30-18:50; Wed: 08:30-18:30; Thu: 08:30-18:30; Fri: 08:30-16:30.

### **Emergency contact details**

During the conference, emergency messages should be sent to [conference@easaonline.org](mailto:conference@easaonline.org).

There will be a message board for delegates at the reception desk.

Rohan Jackson, the conference organiser, can be contacted on Irish cell/mobile phone +353 870 976886.

### **Wireless internet for those with their own laptops**

There is wireless access within the conference venue and accommodation. Log in to the CONF network using the password: *welcome-2-nuim-conference-152637*. If you have problems with access please ask at our reception desk.

The wireless network only extends to the *University Village* accommodation; elsewhere in campus rooms, you will require an ethernet cable to access the net (available from accommodation reception), and a guest account (also available from accommodation reception, and/or the Public Access Computer Room (PACR) in Rye Hall during its opening hours – see below).

### **Internet for those without laptops**

You may make use of computers around the site in the Callan building, the Arts building and in the Public Access Computer Room (PACR) in Rye Hall – where there are 80 at your disposal. To log into any of these computers you will need to obtain a login from the technician looking after our main facility, the PACR in Rye Hall. So if you think you will need access during the conference, please get a login from the PACR during its opening hours:

Tuesday: 12:00-17:00, Wednesday & Thursday: 10.30-17:00, Friday: 10.30-15:00.

### **Printing**

If you need to print your finished paper, this can be done with the help of the technician in the PACR, in Rye Hall, during its opening hours. Given that EASA (and the planet) have to foot the bill, we ask you to show restraint in your use of this service, and only print for your own use, and not for distribution to those attending workshops. If colleagues wish to have a copy of your paper, please email them a digital version. The PACR opening hours will be:

Tuesday: 12:00-17:00, Wednesday & Thursday: 10.30-17:00, Friday: 10.30-15:00.

### **Conference badges and dinner tickets**

On arrival at the reception desk you will be given this book and your conference badge.

Inserted in your plastic badge holder will be your banquet ticket, if you have booked one. This

ticket must be presented to gain entry to the conference dinner on the Friday night – please do not lose it.

EASA re-uses the plastic badge holders and lanyards, so please hand these in at the boxes provided on the reception desk (or to a member of the conference team) when leaving the conference for the final time. This not only saves resources, but helps keep registration costs to a minimum.

The conference organisers' office will be running an exchange for those who wish to sell their banquet tickets; so if you are still interested in attending the banquet, but don't yet have a ticket, please leave your name at the NomadIT office.

### **Conference club: Mantra**

Mantra, a large bar/club in the town which can actually hold the entire conference (the only place in Maynooth which can!), will act as our unofficial conference 'club'. They will be open late every night, and besides the attraction of their bars, there will be live music and DJs. They will serve food until 11pm every night. Mantra will be the site of the conference closing party after Friday's banquet, with a special guest DJ.

### **Local travel**

Everything you might want in Maynooth is within a ten minute walk. However, if you wish to go into Dublin or to the airport the following information may be useful.

#### **Taxi phone numbers**

Express Cabs (+353 1) 628 9866

Maynooth Cabs (+353 1) 628 9999

MCL Cabs (+353 1) 628 6539

Major Minor Cabs, Maynooth (+353 1) 601 6160

Manor Cabs, Maynooth (+353 1) 629 3593/7

Seamus Murray (+353) 87 268 4399

Tara's Taxis (+353) 86 369 5518 (40€ to the airport!)

A taxi from Maynooth to the airport should cost around €50-55, and take from 25 minutes to an hour (at rush hour).

Full travel information with maps and useful links is provided on the conference website.

### **Heading into Dublin?**

The easiest way to get into Dublin is by train, which takes 42 minutes, and costs €3.30 single or €6 return. Trains run about every half an hour, but there are detailed timetables on the noticeboard by the reception desk.

NUI Maynooth is served by bus 66 and 67a. These buses run frequently (every half hour or so) to/from Pearse Street in Dublin city centre, take 70 and 80 minutes respectively, and cost €2.10 single. (There are also 66x and 67x express services to/from Maynooth, which take only 60 minutes, but these run only at commuter hours.)

### **Night owls**

Please note that the last train out of Dublin Connolly for Maynooth, leaves at 23:17, Mon-Sat (20:52, Sunday). The last regular bus back to Maynooth (66) from Dublin leaves at 23:30. There is however a €5 night bus, 67n, which departs Westmoreland Street at midnight, 02:00 and 04:00.

## Student guide (to Maynooth)

### Introduction

It is my great pleasure to introduce the *Student guide* to the 2010 EASA Conference in Maynooth, Ireland. From the beginning of 2010 onwards a number of students, especially Tara Taheny, Sarah Walsh, Dwane Martin, Matthew Kennedy, Olive Sheehan, Karen Kelly and Marianne Walsh, have volunteered significant amounts of their time to help put this guide together. On behalf of the Department of Anthropology and on behalf of EASA and the delegates at the conference I would like to thank them for their hard work.

While they were destroying shoe leather going from business to business in Maynooth, meeting owners and managers and spreading the word about the conference, our volunteers were warmly received by local business owners and managers. Everyone was very excited about the prospect of welcoming such a cosmopolitan event to our town and very grateful for the opportunity to get involved in some way. Over the past years our university has recorded the fact that the lasting impression among our graduates is that of a friendly space to study and a friendly town: a warm place (denoting atmosphere, not climate) where everyone feels at home. Here, we have provided a guide to our home which indicates places to eat, sleep, drink and play.

Our conference venue is the National University of Ireland Maynooth (NUIM), which is located right next to St Patrick's College, Maynooth – we share a beautiful 200-year-old campus; our town is a historic 'planned town' with a tree-lined main street with the 'old campus' and castle on one side and Carton House on the other. Simply put, you will be staying in a beautiful place that's largely impossible to get lost in. If you wish to venture further away, Dublin is a bus or train journey away, passing by the technology parks next to Maynooth – Ireland's Silicon Valley. And, from high-tech business on one side, those who have a car or care to travel to Dublin and then take a bus could end up going south to Glendalough, the 6<sup>th</sup> century monastic settlement in Co Wicklow, or north to the Megalithic ritual landscapes in Co Meath with their 5000-year-old passage tombs.

Ireland is perhaps best known for its seemingly infinite galaxy of literary stars. Those great writers continue to be beguiled by the enigmatic quality of the place and the people: to quote Sebastian Barry, Ireland is 'moored only lightly to the sea bed'. While enjoying the EASA conference in Maynooth please also enjoy Ireland, and we hope our guide goes some way to helping you do that.

*Dr Mark Maguire, NUIM*

## General information\*

General information may be found via our conference sponsor Fáilte Ireland, [www.discoverireland.ie](http://www.discoverireland.ie). Fáilte Ireland has an extensive network of tourist offices.

**Contraceptives** can be purchased at supermarkets and pharmacies across Ireland, though the pill is available only on prescription.

**Costs** have risen over the last decade. It is still possible to eat in cafes and pubs for around €8, but a full dinner with three courses will usually cost at least €30. Wine in restaurants is especially expensive. Accommodation is also expensive, with a decent bed and breakfast room from around €32-37 per person sharing or €40 in Dublin.

The **currency** in the Republic of Ireland is the euro.

**Crime** in Ireland is low by European standards. However, be careful in popular tourist spots. You must be careful in certain urban centres and neighbourhoods. The police are An Garda Síochána ([www.garda.ie](http://www.garda.ie)), aka the guards or Gardaí. The Irish Tourist Assistance Service (+353 1 478 5295, [www.itas.ie](http://www.itas.ie)) offers support to tourist victims of crime. Rape crisis support is available from the Dublin Rape Crisis Centre (1800/778888), which can also direct you to similar agencies across Ireland.

The **emergency number** in Ireland is 999 or 112.

**Disabled travellers** should note that facilities in Ireland are often poor, especially in older buildings and it's wise to plan trips ahead of time.

**Electricity** supply is 220V AC in the Republic of Ireland but 240V AC in the North. Most sockets require three-pin plugs (UK type).

**Getting around** is easy enough from Maynooth. The bus stop and railway station are marked on the map. The bus and rail companies are Bus Éireann (Dublin Bus) and Iarnród Éireann (Irish Rail) and a network of private buses.

**Opening hours** for shops and businesses across Ireland are usually 9am to 5.30pm, Monday to Saturday. In most large towns shops open late (until 8pm or 9pm) one day a week, usually Thursdays, and some also open on Sundays from around noon until 6pm. Cafes tend to open from 8am or 9am until 6pm, Monday to Saturday, restaurants 12-3pm and 6-10pm daily. Pubs open Monday to Thursday 10.30am to 11.30pm, Friday and Saturday 10.30am to 12.30am and Sunday 11.30am to 11pm.

**Payphone** calls start at 50c; call cards may be bought in many newsagents. The cheapest way of making international calls is via VoIP at an Internet café. The international dialling code for the Republic is +353. Ireland is on **GMT**.

**Post** is through An Post. There's an office in the university. Ask the conference team for directions.

**Tiping** is discretionary but expected at about 10% by restaurant staff if service is not included, and the same with taxi trips. The general rule is to ‘round it off’. If your restaurant bill is €90 then round it off to €100. If the taxi trip cost €9 then round it off to €10. Please also note that separate bills are generally not provided in restaurants.

*\*in alphabetical order – just in case you are wondering why we put information on contraceptives at the top of our guide...*

### **Information on Maynooth**

Firstly: a little history. The town of Maynooth takes its name from Nuadha Neacht, a pre-Christian King of Ireland, or perhaps from a later Mogh Nuadhat, a ruler of the second century after Christ. The actual origins of Maynooth date from the late 12th century when the Fitzgeralds were granted the Manor of Maynooth. It is an 18th century ‘planned town’ with a population of 12,500.

Maynooth College was founded as a Catholic seminary in 1795, and at the gates you will find the ruined castle that was formerly the home of the Fitzgerald family. At the far end of the town you will find Carton House, which was built around 1760 and was the residence of the Dukes of Leinster.



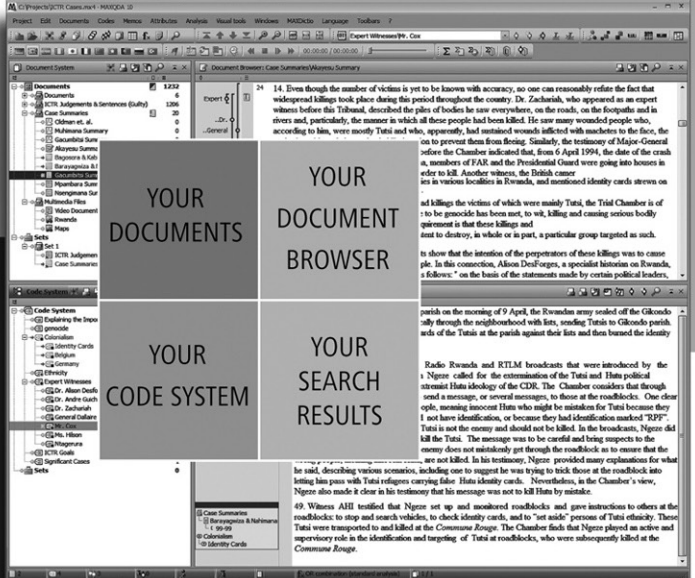
# MAXQDA<sup>10</sup>

The Art of Text Analysis

Professional software for  
**Qualitative  
 Data  
 Analysis**



MAXQDA offers  
 a clear and intuitive structure:  
 4 workspaces – 4 windows.



**Powerful  
 user friendly  
 easy to learn**  
[www.maxqda.com](http://www.maxqda.com)

Find out more  
 about **MAXQDA** in:



Lewins/Silver - Corbin

- Text Analysis
- Content Analysis
- Mixed Methods
- Knowledge Management
- Grounded Theory
- Field Research
- Interviews
- Protocols
- Documents
- Literature

MAXQDA ist a Product of



Software – Consult –  
 Sozialforschung GmbH

SOFTWARE CENTER 3 • 35037 MARBURG, Germany  
 TEL. +49 (0)6421 3400730 • info@maxqda.com

# Food map



**Restaurants**

1. Greens
2. Royal City, Chinese Restaurant
3. Stone Haven Restaurant
4. Riverside Bar and Bistro
5. The Orient, Asian Restaurant
6. Twist Cafe
7. Lotus Chinese Restaurant
8. Avenue Cafe Restaurant
9. Meghna (Indian) Restaurant
10. Mantra
11. Donatello's Italian Restaurant
12. Kehoe's

**Price guide:**

- € Cheap  
€€ Mid range: starters below €5; mains under €15  
€€€ Higher prices

**Capacity guide:**

- h** Small venue  
**hh** Mid size venue, 30+ seats  
**hhh** Large venue, 50+ seats

**Cafes**

- i. The Mill Wine Cellar
- ii. The Coffee Mill
- iii. Esquires Coffee House
- iv. The Elite Confectionary
- v. Bagel Factory

**Pubs**

- a. O'Neill's Pub
- b. Caulfield's Pub
- c. Brady's 'The Clock House'
- d. Mantra Garden Bar and Club
- e. The Roost

## **Restaurants**

### **1. Greens, 245 Main Street (+353 1) 6548000**

A smart, sophisticated bistro; opens from 12:00 to 22:00, but may serve breakfasts.

*Special dishes and prices for the conference.*

Price guide: €€ to €€€: you can choose carefully and come out with a reasonable and yet good quality meal. Capacity guide: hh

### **2. Royal City, Chinese Restaurant, Mill Street, (+353 1) 6106630**

Standard Chinese restaurant

Price guide: €€, Capacity guide: hh

### **3. Stone Haven Restaurant, Mill Street, (+353 1) 6291229**

Email: [stonehavenrest@eircom.net](mailto:stonehavenrest@eircom.net)

<http://www.stonehavenrestaurant.com/stone-haven-restaurant.html>

*Special dishes and prices for the conference.*

Located on Mill Street, this nice restaurant opens for dinners from 17:00 but also for lunches if you phone in advance and book for a large group (say 15+). Wooden flooring, natural colours interspersed with stone walls, cosy underground location; with room for snug gatherings or larger debates. Modern, simple but elegant epicurean delights from ostrich or wild boar to more standard fare. Mains usually around €22 appetizers €7. If you're OK with parting with € 26.95, try the 10oz fillet steak on a bed of sauteed mushrooms.

Price guide: €€€: choose carefully and you'll do OK, Capacity guide: hh

### **4. Riverside Bar and Bistro, Mill Street (back of shopping mall)**

*Special dishes and prices for the conference.*

Salads, paninis, wraps and burgers served in modern, clean-lined interior, with pleasant ambient music and friendly helpful staff. Go for the beef steak, Guinness and mushroom pie with fresh market vegetables and mash potato.

Price guide: €€, Capacity guide: hhh

### **5. The Orient, Asian Restaurant, Main Street (+353 1) 6285888**

*Special dishes and prices for the conference.*

Recently opened, excellent and reasonably priced Asian restaurant, with friendly staff and a very flexible attitude. The dishes are a mix of Chinese and Thai. There will be conference

plates and discounts and most people will want to try the buffet lunch for €8.80, which includes choices from 30 different dishes and is offered from 12:30 to 15:30. Dinner is served from 19:00 to late.

Price guide: €, Capacity guide: hhh

**6. Twist Cafe, 1 Fagan's Lane (+353 1) 6293957**

*Special dishes and prices for the conference.*

Located at 1 Fagan's Lane, which is off the Main Street left hand side town centre, about 250m from the university's gates. The Twist suggests it thrives on the professional approach of preparing the entire menu each day and cooking to order. Opening from 08:30 to 17:30, catering for breakfast, lunch and snacks. Twist will also open for the conference in the evenings and serve tapas-style dishes. The all-day menu offers a wide and interesting range of choices from a Danish pastry at €2.50, pancakes at €4.25 and scrambled egg with smoked salmon at €6.95, to three choices of Irish breakfast – mini €6, full €8 and mega €9.40. The lunch and snack menu offers lunch specials at around €8 in addition to soups, bagels, panini, sandwiches, salads and desserts costing on average about €6. The Twist is not licensed to serve alcohol, but you may bring your own wine and there is no corkage charge. Single parties of up to 15 can be catered for with advanced notice. Take away is also available. Office platters are available for delivery with 24 hrs notice. Information on all menus and services can be accessed on their web page.

Price guide: €, Capacity guide: h

**7. Lotus Chinese Restaurant, Main Street (+353 1) 6292265**

Standard Chinese restaurant

Price guide: €, Capacity guide: hhh

**8. Avenue Cafe Restaurant, Main Street (+353 1) 6285003**

[www.avenuecafe.ie](http://www.avenuecafe.ie)

*Special dishes and prices for the conference.*

Located on the top righthand side of Maynooth's Main Street, about 500m from the university's gates. Open for lunch and evening meals. Cuisine may be described as casual bistro with an emphasis on Irish produce. For example, you can have Bantry Bay mussels or Clonakilty black pudding topped with a poached egg for starters. Main courses include a selection of eight

different burgers made with 100% Irish beef, in addition to Kildare rack of lamb, steaks, fish and chicken, and salad dishes.

Prices range from €4.50 for soup to €30 for a 10oz fillet of beef. However, the average price is about €15, and specials are served each day, such as soup, a panini and tea or coffee for €10. The Avenue also has a large selection of wines and bottled beers. A full menu and wine list is included on their web site.

There is seating for 57 and booking is strongly recommended. Single parties of up to 50 can be catered for with advanced notice.

Price guide: €€ to €€€: you can choose carefully and come out with a reasonable and yet good quality meal, Capacity guide: hhh, 50+ seats

#### **9. Meghna (Indian) Restaurant, Main Street (+353 1) 5054868**

*Special dishes and prices for the conference.*

Located on the Main Street above Caulfield's Pub (all directions in Ireland are given with pubs as the reference points). A nice Indian restaurant: calm, mild interior set off with hints of dark wood and gold. Succulent and tender meat, rich flavourful sauces and generous helpings. Try the Piazza Gosht - pieces of tender lamb cooked with herbs, spices, onion, green peppers and tomatoes. Mains for around €11 appetisers €5.95. Lunch and dinner.

Price guide: €€, Capacity guide: hhh

#### **10. Mantra, Main Street**

*Special dishes and prices for the conference.*

Our conference entertainment location also has really good, reasonably priced food.

Price guide: €, Capacity guide: hhh, 50+ seats

#### **11. Donatello's Italian Restaurant, Unit 1, Town Centre Mall (+353 1) 6289660**

Many a first date ended badly after one or the other person ordered the Antonio's extra spicy pizza with extra garlic. That said: this small family-run restaurant does nice food in a small intimate space. Well worth trying, especially for the T-bone and some really good chicken dishes.

Price guide: €€ to €€€: you can choose carefully and come out with a reasonable and yet good quality meal, Capacity guide: h

## 12. Kehoe's

He may or may not be open, and we don't know the prices. But Mr Keogh is worth keeping an eye out for. Great food, great host, and a fantastic atmosphere – a real local institution!

### **Restaurants**

Fitzgeralds Roost, Main Street (+353 1) 6289844

Back of the pub, and upstairs.

### **Cafes**

i. The Mill Wine Cellar, Mill Street

Best coffee in town!

ii. The Coffee Mill, Mill Street

Not the best coffee in town, but they do have fairly cheap sandwiches and canteen-style food.

iii. Esquires Coffee House

Located to the rear of the Manor Mills Shopping Centre, Esquires offers both indoor and outdoor seating. It has a wide variety of coffees, teas and hot chocolate, with prices starting from around €1.80. It provides breakfast, lunch and small snacks. The lunch menu and snacks are available all day and include, muffins, slices of cake, a choice of cookies/shortbread, paninis, sandwiches and salad bowls.

iv. The Elite Confectionary, Main Street

Tea, coffee and cakes

v. Bagel Factory, Main Street

Bagels and much more.

There are several other cafes around the town.

### **Pubs**

a. O'Neill's Pub, Main Street (+353 1) 6286255

<http://oneillsbar.ie/discobar.php>

Located on the lefthand side of Main Street, about 200m from the university's gates. O'Neill's is advertised as a typical Irish bar providing drink, food and entertainment. The lunch menu is available from 12:00 to 16:00 offering the usual 'Pub Grub' of soups at €3.95, or soup and sandwich with tea or coffee for €9. Also a choice of roast meals or baked fish averaging about €11 is served. The evening menu from 16:00 to 21:00 includes a selection of starters of soup, prawns or warm chicken salad ranging from €4 to €7. Main courses include O'Neill's speciality of steaks or fillet of beef ranging in price from €16 to €25 (the owner of the bar is a professional butcher). Also available is a selection of fish, chicken, curry and vegetarian dishes with an average price of around €13. Single parties of up to 26 people can be catered for with advanced booking. Wine selection is limited but a wide range of bottled and draught beer is available in addition to a good selection of spirits. Evening entertainment is provided by a group of musicians who play selections of modern and traditional Irish music. Full information regarding menu and entertainment is available on their web page.

Price guide: €, Capacity guide: hhh, 50+ seats

**b. Caulfield's Pub, Main Street (+353 1) 6286078**

Good old-fashioned pub. Toasted BLT, chips and salad for €6.95. Main meal €11 sandwich €6.

Price guide: €, Capacity guide: hhh, 50+ seats

**c. Brady's 'The Clock House', Main Street (+353 1) 6286225**

Located half-way up Main Street on the right hand side, about 300m from the college gates. This is one of the oldest pubs in Maynooth. It serves lunch and evening meals and also provides a mixture of traditional and modern Irish music on Tuesday, Wednesday and Thursday evenings. Cuisine is classic 'Pub Grub', with lunch served as a carvery from 12:00 to 15:00, which includes starters of soup, chowder and salads. The main courses are roasts, burgers, curry, Irish stew, and steaks. The evening menu is available from 16:00 to 20:45 and is à la carte. Prices range from €4 for soup to €18 for a 10oz sirloin steak. However, most meals average about €11. Wine selection is limited but a wide range of bottled and draught beer is available in addition to a good selection of spirits. Normally booking is not required but single parties of up to 10 would require advanced notice.

Price guide: €, Capacity guide: hh, 30+ seats



**d. Mantra Garden Bar and Club, Main Street**

<http://www.mantrabar.ie>

Mantra is a strangely exotic and very welcome intrusion into our 18<sup>th</sup> century town. It has a capacity for 2,100 people and will be our conference night spot.

The food's great. The drinks are good. There's a great garden with giant statues, a nightclub, VIP areas, friendly staff – what's not to like?

Price guide: €, Capacity guide: hhh, 50+ seats

**e. The Roost, Main Street (+353 1) 6289844**

This place is an institution! The front bar is where locals and academics mix with pints and an open fire; usually 'the craic' can be had here. The back bar is a huge venue with disco upstairs. Open from midday onwards, and overall seating for 400. There's 'pub grub' also.

Price guide: €, Capacity guide: hhh

**Other pubs**

Hotels such as the Glenroyal and Carton House also have bars and restaurants.

**Fast food**

Supermacs, Main Street (+353 1) 6290982

Price guide: €, Capacity guide: hh

Rebel Pizza, Mill Street (+353 1) 6292929

Rebel Pizza is a takeaway, offering its customers a wide range of choices including burgers (chicken and beef), kebabs and a variety of side orders including onion rings, garlic mushrooms, potato wedges and chips, with prices from €3 to €6.50. Unsurprisingly, Rebel is best known for its pizza and its huge assortment of toppings. Prices range from €6 for a 7" 'personal pizza' to €20 for a 16" pizza – do not try that alone!

Price guide: € to €, Capacity guide: Takeaway

Mizzoni Pizza, Main Street (+353 1) 6290982

Home of the biggest pizzas in Maynooth, relatively good choice of toppings for custom pizzas and good choice of house specials. Also offers a small range of pastas.

Price guide: € to €, Capacity guide: Takeaway

Maximus, Main Street

Cuisine can be described as that of a typical Irish takeaway, offering burgers (beef, chicken, fish and vegetarian), sausages, portions of chips and pizzas. Prices range from €2 for a portion of chips to €8 for specific meal deals. Good after a few pints.

However, do not go in there drunk and shout: “My name is Maximus Decimus Meridius, Commander of the Armies of the North, General of the Felix Legions, loyal servant to the true emperor, Marcus Aurelius. Father to a murdered son, husband to a murdered wife. And I will have my vengeance, in this life or the next.” They’ve heard it before ....

Price guide: €, Capacity guide: Takeaway

There are a variety of other takeaways dotted about Maynooth.

### **Supermarkets**

Aldi, Kilcock Road

Centra, Main Street

Dunnes Stores, Manor Mills

Lidl, Straffan Road

SuperValu, Glenroyal Shopping Centre, Straffan Road

Tesco, Carton, Park Dublin Road

### **Newsagents**

Eason’s, Unit 16, Manor Mills Shopping Centre (+353 1) 6293765

News-4-U, Glenroyal Shopping Centre

### **Hotels**

The Glenroyal Hotel and Leisure Centre, Straffan Road (+353 1) 6290909

Barberstown Castle, Straffan (8km) (+353 1) 6288157

Carton House, Carton Estate (5km) (+353 1) 5052000

### **Banks**

AIB, Main Street (+353 1) 6286355

Bank of Ireland, Main Street (+353 1) 6286811

Permanent T.S.B, Main Street (+353 1) 6281404

Ulster Bank, Main Street (+353 1) 6285533

### **Post Office**

Maynooth Post Office, Unit 3-4, Carton Park (+353 1) 6286259

### **Launderettes/Dry Cleaners**

Carlton Cleaners, Carton Park (+353 1) 6285511

Carton Dry Cleaners, Manor Mills Shopping Centre (+353 1) 6016872

Greenfield Dry Cleaners, Greenfield Shopping Centre (+353) 87 2235561

Snow White Laundrette, Main Street (+353 1) 6106709

### **Computers (Repairs, Components, Printers, Ink)**

Click, Manor Mills Shopping Centre (+353 1) 6292300

Inkjet World, Mill Street (+353 1) 6106717

### **Barbers**

Charlie's Barbers, Manor Mills Shopping Centre (+353 1) 6291883

Redz Barberz, Greenfield Shopping Centre (+353 1) 6292681

The Square Barbers, 1 The Square (+353 1) 6289363

The Barbers, Main Street

### **Hairdressers/Beauticians**

Cameo Beauty Clinic, Main Street (+353 1) 6286272

Ealu Therapy, Glenroyal Hotel & Leisure Centre (+353 1) 5054622

Helen Grays Beauticians, Mill Street (+353 1) 6106533

Je'Meills, Main Street (+353 1) 6016714

OB-1, Glenroyal Shopping Centre (+353 1) 6293900

Occasions Hairdressers, Carton Park (+353 1) 6291805

Sandy Secret's Office, 1 unit 5 Manor Mills (+353 1) 6291915

## Things to do and see in the region

### A perfect day in Dublin

Start with a coffee in the Bald Barista (this guy is a gem: best coffee in the city). Go to 68 Aungier Street in the city centre.

Head to St Patrick's Cathedral and look at the death mask of Dean Swift, author of *Gulliver's Travels* ([www.stpatrickscathedral.ie](http://www.stpatrickscathedral.ie))

Visit the Book of Kells in Trinity College Dublin, an extraordinary national treasure dated to between 561 and 800. See [www.bookofkells.ie](http://www.bookofkells.ie). You should also spend time on the 'Old Library'.

Hungry? Well walk down Dame Street and look for an image of a Stag's Head on the ground on the left side of the road leading away from Trinity, turn left into an alley when you see that and on the far side is the Stag's Head pub ([www.thestagshead.ie](http://www.thestagshead.ie)). The boiled bacon and cabbage with parsley sauce and a pint of Guinness in this nineteenth-century pub is exactly what you need.

Next to Dublin castle. Built between 1208 and 1220, this was the centre of English power in Ireland for over seven centuries. Look for the Undercroft where an early Viking fortress stood. [www.dublincastle.ie](http://www.dublincastle.ie)

Cross the Liffey and walk towards Smithfield. You'll want to stop at St Michan's Church where the burial vault holds the remains of a Templar Crusader, who was so tall he had to be sawn in half to fit into the coffin. The story goes that Bram Stoker's *Dracula* was inspired in part by the author's childhood visits to this macabre vault.

<http://www.sacred-destinations.com/ireland/dublin-st-michan-church>

Cross the Liffey again and go to Kilmainham Gaol, the prison where the leaders of the 1916 Rebellion were executed. ([http://www.dublintontourist.com/details/kilmainham\\_gaol.shtml](http://www.dublintontourist.com/details/kilmainham_gaol.shtml))

Another Pint? Back into the city centre and go to Davey Byrne's, 21 Duke Street, which was featured in James Joyce's *Ulysses*. <http://www.davybyrnes.com/>

You could eat there or try one of the following:

- The Michelin-star Chapter One, 18-19 Parnell Square, Basement of Writers' Museum, Dublin 1 (+353 1) 8732266, booking essential  
Price guide: €€€
- Elephant and Castle, 18 Temple Bar, Dublin 2 (+353 1) 6793121  
<http://www.elephantandcastle.ie/>  
You NEED to try the chicken wings!  
Price guide: €€

- Good World Chinese Restaurant, 18 South Great Georges Street, Dublin (+353 1) 6775373  
[www.goodworldrestaurant.com](http://www.goodworldrestaurant.com)  
Ask for the Chinese menu!  
Price guide: €

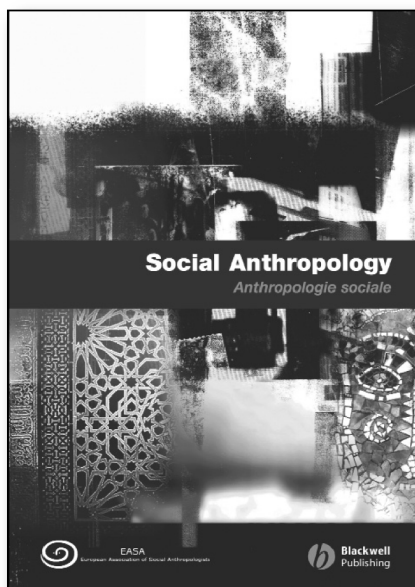
**Trip outside of Dublin?**

You really should go to Newgrange and the ritual landscape of the Boyne Valley. At over 5,000 years old, Newgrange is older than either Stonehenge or the Great Pyramid of Giza. It's a part of a UNESCO World Heritage Site.

For information on day tours see <http://www.newgrange.com/daytours.htm>

# **Social Anthropology/** *Anthropologie Sociale*

Published on behalf of the European  
Association of Social Anthropologists



**Edited by Dorle Dracklé and  
Helena Wulff**

- Acclaimed journal of the European Association of Social Anthropologists, the major professional organization for anthropologists in Europe
- Publishes key contributions by both established and up-and-coming anthropologists
- As part of the intellectual vitality of the journal, it also features an exciting Debate in every issue, an important Review Essay which discusses outstanding books in adjoining disciplines or in public debate from an anthropological point of view, and a thriving Book Reviews Section
- Whilst European in profile, this leading journal has a global scope

**Visit the Wiley-Blackwell stand to receive a  
free sample issue**

 **WILEY-  
BLACKWELL**

## Events and meetings

There are many other events taking place, beside the workshops and plenaries. These are all described here.

### **The Film programme, Humanities Lecture Theatre**

There will be a film programme screening films throughout the eight workshop sessions of the conference. Details of the film programme can be seen under Workshop W104.

## Tuesday 24th August

### **Welcome reception, 19:00- , Pugin Hall**

The welcome reception will take place from 19.00 onwards in the historic Pugin Hall in the university's South campus. The reception will involve welcome addresses by Professor John G Hughes, President of National University of Ireland, Maynooth, and Mr Francis Jacobs, Head of the EU Parliament in Ireland. Tarab, the celebrated multicultural music ensemble, will entertain delegates as they catch up with colleagues and enjoy wine and small bites of food. The welcome reception is generously supported by NUI Maynooth's Vice President for Research, Professor Ray O'Neill.

## Wednesday 25th August

### **Social Anthropology/Anthropologie Sociale: the EASA journal debate, 13:30-14:30, John Hume Lecture Theatre 1**

How do we train future anthropologists – new horizons, more of the same?

Debate between João de Pina Cabral (University of Lisbon) and Maria Couroucli (Université Paris Ouest - Nanterre La Défense)

Chair: Helena Wulff (Stockholm University), Co-editor

### **Book launch: Pluto Press and Ulf Hannerz, 16:00-16:30, Publishers' space**

Pluto Press and Ulf Hannerz invite you to bring your tea/coffee and partake of some cake to celebrate the launch of Ulf's new book, *Anthropology's World*. Written from the perspective of someone active in the discipline for over five decades, the book explores both anthropology as a social world with its own relationships, ideas and practices, and also how anthropology relates to and exists within the wider world. EASA President, Michal Buchowski will introduce the author.

**SA/AS journal and Wiley-Blackwell reception, 18:00-18:30, Publishers' space**

Wiley-Blackwell and the editors of *Social Anthropology/Anthropologie Sociale*, Dorle Dracklé and Helena Wulff, invite you to a glass of wine to celebrate the ongoing success of EASA's journal.

**Roundtable: Universities of 'knowledge' and 'learning'? Implications for anthropology?, 18:30-20:00, John Hume Lecture Theatre 1**

All are welcome to attend this roundtable, which will be chaired by Susan Wright (University of Århus).

Whereas universities used to be about 'research' and 'education'; seemingly suddenly in the 1990s these terms were supplanted by the words 'knowledge' and 'learning'. Why? What is going on? The EU, OECD and World Bank project the 'global knowledge economy' as an inevitable future. 'New human capital theory' argues that education is not a public good, but an individual responsibility to invest in learning and be employable. Universities are seen as the drivers of this new economy: they are enjoined to create knowledge that is 'useful' and turned quickly into commercial products, and to produce a 'flexible' workforce with advanced analytical and transferable skills.

The roundtable will address the following questions:

How is the shift from 'research' to 'knowledge' and from 'education' to 'learning' affecting your university?

How are academics and students responding, individually and collectively?

What are the implications for anthropological research and education – negative and positive?

Speakers: Professor Susan Wright (University of Århus), Professor Dominic Boyer (Rice University) and Professor Cris Shore (University of Auckland).



### **Network meetings, 20:00-21:30**

The following networks will have meetings on the Wednesday evening:

Anthropology and Mobility (new) - Arts Classhall B

MACnet - Arts Classhall C

Medical - Arts Classhall D

Mediterraneanist - Arts Classhall E

Religion - Arts Classhall H

Teaching - John Hume Lecture Theatre 5

Visual - John Hume Lecture Theatre 6

These business meetings are open to all – those already in the network and also those interested in possibly participating in their activities.

### **Presidential reception, 20:00-21:00**

The EASA executive will hold a small reception to meet with the Presidents of other national and international anthropology associations. By invitation only.

### **Concert, 20:30-22:45, St Mary's Church**

Traditional and experimental music & song in a beautiful acoustic space. The first set will feature Caoimhín Ó Raghallaigh (fiddle) and Mick O'Brien (uilleann pipes) who released one of the finest traditional albums of the past decade. Eithne Ní Chatháin (voice, piano, etc.) and her innovative band performed in the National Concert Hall recently. She, Seán Óg (saxophone, clarinet, etc.) and Cormac O'Brien (double bass) will play the second set of this showcase concert.

St. Mary's Church of Ireland and Maynooth Castle frame the main gates of the university's south campus. Admission to the concert will be by ticket only with 200 tickets on sale for €10 euro at the reception desk during the conference.

### **Music in Mantra, 22:00 till late**

Downstairs: traditional music sessions from 21:00.

Upstairs: listening club from 23:00 featuring the Mulcahy family, some of the concert performers and other invited musicians, singers and dancers.

## **Thursday 26th August**

### **Getting published, 13:30-14:30, John Hume Lecture Theatre 1**

There will be short talks by the SA/AS editor, Dorle Dracklé, and the EASA Book Series Editor, James Carrier, regarding how to get your books and papers published.

### **Network convenors meeting, 13:30-14:30, Rowan 2.20**

This meeting is a chance for the convenors of the different EASA networks to get together, face-to-face, along with the President and Secretary of EASA, and discuss common issues.

### **Berghahn reception, 18:00-18:30, Publishers' space**

Please join Vivian and Marion at the Berghahn Books stand to celebrate the publication of the most recent volumes in the EASA series, efficiently and sensitively edited by James Carrier. We are particularly pleased to launch *Culture Wars: Context, Models and Anthropologists' Accounts*, edited by Deborah James, Evelyn Plaice and Christina Toren, which touches upon some fundamental issues of concern to anthropologists and is dedicated to Adam Kuper, one of the founding members of EASA. We also want to take this opportunity to thank all Berghahn authors for a very enjoyable collaboration and hope to meet with many of them at the conference.

### **Cultural Anthropology reception, 18:00-18:30, Foyer of John Hume building**

Please join representatives of the Society for Cultural Anthropology for a wine and cheese reception to celebrate the ongoing success of the Society's journal, *Cultural Anthropology*. Since 1986, *Cultural Anthropology* has published ethnographic writing informed by a wide array of theoretical perspectives, innovative in form and content, and focused on both traditional and emerging topics. It also welcomes essays concerned with theoretical issues, with ethnographic methods and research design in historical perspective, and with ways in which cultural analysis can address broader public audiences and interests. Back copies of the journal and information for potential authors will be available for inspection.

### **Network meetings, 18:30-20:00**

The following networks will have meetings on the Thursday evening:

Africa - Arts Classhall B

Europeanist - Arts Classhall C

Media - Arts Classhall D

Medical (for students) - Arts Classhall E

Middle East and Central Eurasia - Arts Classhall H

PACSA - John Hume Lecture Theatre 5

Sacral Healing - John Hume Lecture Theatre 6.

These business meetings are open to all – those already in the network and also those interested in possibly participating in their activities.

### **Céilí/dance, 20:30-23:00, Aula Maxima**

Welcome to a night of social dancing & traditional entertainment. Music by the Temple House Céilí Band with songs & solos from other acclaimed artists.

Dances will be taught on the night.

The Aula Maxima is on the South campus. Admission will be by ticket only and these will be on sale for €5 at the reception desk during the conference.

### **Music in Mantra, 22:00 till late**

Downstairs: nightclub.

Upstairs: traditional music, singing and dancing from 23:15 featuring some of the céilí artists.

## **Friday 27th August**

### **Free workshop with members of Yurodny: Crisis and imagination in music, 11:30-12:30, Education theatre**

As well as performing at the conference banquet, Yurodny are offering a free music workshop for those who want a break from papers.

### **The Wenner-Gren Foundation Grants workshop, 13:30-14:30, John Hume Lecture Theatre 1**

The Wenner-Gren Foundation is a unique organisation whose primary goal is to support the discipline of anthropology worldwide. The Foundation has a variety of grant programs aimed at funding research and building an international community of anthropologists. This workshop introduces the Foundation's basic programmes, in particular its programmes to fund original research (at the dissertation and Post-PhD level) and gives advice and tips on what the Foundation is looking for in a research project to help you write a more competitive proposal.

### **Members forum/AGM, 16:30-18:00, John Hume Lecture Theatre 1**

All members of EASA are invited to attend this brief business meeting, where the Executive will present their reports and be available for questions from the members.

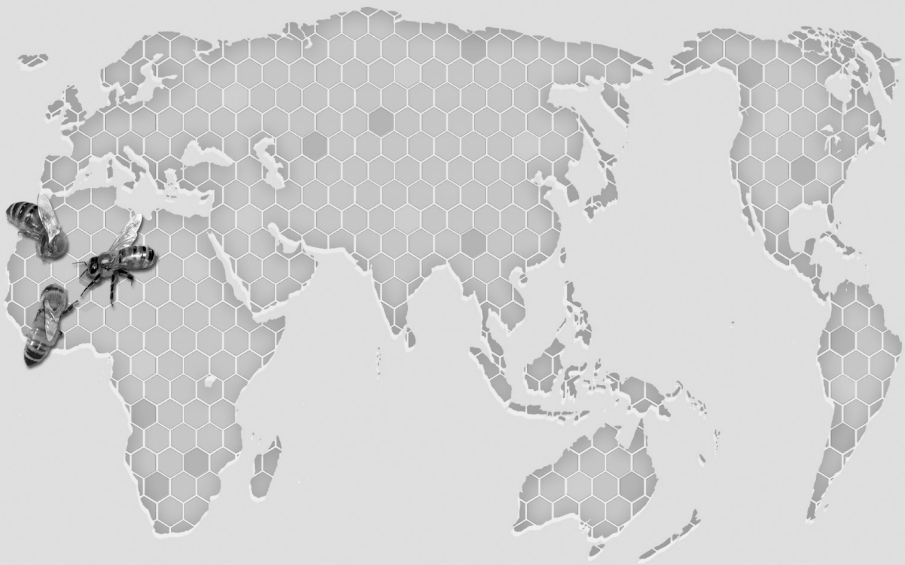
### **Conference dinner/banquet, 20:00- , Loftus and Pugin Halls**

The conference banquet will begin at 20:00 with drinks, appetizers and music along the cloisters of the university's South campus. Banquet-goers will then enter Pugin Hall for dinner and dessert and will be entertained by the wonderful ensemble Yurodny. The banquet dinner will close with a very special toast: a distiller from Jameson irish whiskey will introduce irish whiskey with a premium tasting and we will raise a glass to close the conference.

### **After party - Mantra**

When the banquet is over, delegates are encouraged to keep the party going at a late music night, with special guest DJ, in Mantra.

People make places  
ways of feeling the world



The 10th congress for the International Society of Ethnology and Folklore (SIEF)  
Faculty of Social and Human Sciences of the Universidade Nova de Lisboa  
17th to 21st, April 2011

[www.siefhome.org/sief2011](http://www.siefhome.org/sief2011)

SIEF 2011

Call for papers closes October 15th

## Daily timetable

### Tuesday 24th August

#### 12:30-17:00

Reception desk opens and distributes badges and programmes (Humanities building)

#### 17:00-17:30

Welcome (John Hume Lecture Theatre 1/2/3/4)

#### 17:30-18:30

Keynote lecture by Talal Asad (John Hume Lecture Theatre 1/2/3/4)

#### 19:00-21:00

Welcome reception (Pugin Hall)

### Wednesday 25th August

#### 09:00-11:00

Plenary A: Anthropology of warfare, peace and reconciliation (John Hume Lecture Theatre 1/2/3/4)

#### 11:30-13:00 (Workshop session 1)

IW001, IW005, IW006, W004, W007, W010, W012, W015, W016, W019, W022, W026, W028, W032, W036, W038, W041, W043, W047, W049, W053, W054, W055, W059, W061, W064, W065, W066, W068, W074, W081, W083, W086, W087, W089, W093, W095, W096, W101, W104, W112, W113

#### 13:30-14:30

Social Anthropology/Anthropologie Sociale: the EASA journal debate (John Hume Lecture Theatre 1)

#### 14:30-16:00 (Workshop session 2)

IW001, IW005, IW006, W004, W007, W010, W012, W015, W016, W019, W022, W026, W028, W032, W036, W038, W041, W043, W047, W049, W053, W054, W055, W059, W061, W062, W064, W066, W068, W074, W081, W083, W086, W087, W089, W093, W095, W096,

W101, W104, W112, W113

**16:00-16:30**

Book launch: Pluto Press and Ulf Hannerz (Publishers' space)

**16:30-18:00 (Workshop session 3)**

IW001, IW005, IW006, W004, W006, W007, W012, W016, W019, W022, W026, W028, W032, W036, W038, W041, W047, W049, W053, W054, W055, W059, W061, W064, W066, W068, W069, W081, W083, W086, W087, W093, W095, W096, W101, W104, W112, W113

**18:00-18:30**

SA/AS journal and Wiley-Blackwell reception (Publishers' space)

**18:30-20:00**

Roundtable: Universities of 'knowledge' and 'learning'? Implications for anthropology? (John Hume Lecture Theatre 1)

**20:00-21:30**

Network meetings

Anthropology and Mobility (Arts Classhall B)

MACnet (Arts Classhall C)

Medical (Arts Classhall D)

Mediterraneanist (Arts Classhall E)

Religion (Arts Classhall H)

Teaching (John Hume Lecture Theatre 5)

Visual (John Hume Lecture Theatre 6)

**20:30/21:00-22:45**

Concert (St. Mary's Church)

**21:00 – late**

Music (Mantra)

## Thursday 26th August

### 09:00-11:00

Plenary B: Economic crisis or the crisis of an imagined economy (John Hume Lecture Theatre 1/2/3/4)

### 11:30-13:00 (Workshop session 4)

IW003, IW007, W002, W003, W005, W008, W011, W013, W014, W017, W018, W020, W025, W027, W034, W035, W037, W039, W044, W045, W048, W050, W051, W060, W067, W071, W075, W077, W082, W092, W099, W100, W102, W103, W104, W106, W115, W117, W120, W121

### 13:30-14:30

Getting published (John Hume Lecture Theatre 1)

Network convenors meeting (Rowan 2.20)

### 14:30-16:00 (Workshop session 5)

IW003, IW004, IW007, W002, W003, W005, W008, W011, W013, W014, W017, W018, W020, W025, W034, W035, W037, W039, W044, W045, W046, W048, W050, W051, W060, W067, W071, W075, W077, W082, W092, W099, W100, W102, W103, W104, W106, W115, W120, W121, W125

### 16:30-18:00 (Workshop session 6)

IW003, IW004, IW007, W001, W003, W005, W008, W013, W014, W017, W018, W020, W033, W034, W035, W037, W039, W044, W046, W048, W051, W060, W067, W075, W077, W082, W092, W099, W100, W102, W103, W104, W106, W115, W120, W121, W125

### 18:00-18:30

Berghahn reception (Publishers' space)

Cultural Anthropology reception (Foyer of John Hume building)



**18:30-20:00**

Network meetings

Africa (Arts Classhall B)

Europeanist (Arts Classhall C)

Media (Arts Classhall D)

Medical (for students) (Arts Classhall E)

Middle East and Central Eurasia (Arts Classhall H)

PACSA (John Hume Lecture Theatre 5)

Sacral Healing (John Hume Lecture Theatre 6)

**20:30-23:00**

Céilí/dance (Aula Maxima)

**22:00 – late**

Music (Mantra)

## **Friday 27th August**

### **09:00-11:00**

Plenary C: Young Scholars Forum (John Hume Lecture Theatre 1/2/3/4)

### **11:30-12:30**

Free workshop with members of Yurodny: Crisis and imagination in music, Education theatre

### **11:30-13:00 (Workshop session 7)**

W001, W023, W024, W029, W042, W052, W056, W063, W070, W072, W076, W078, W079, W084, W088, W090, W091, W098, W104, W105, W107, W109, W110, W111, W116, W118, W119, W122, W123

### **13:30-14:30**

The Wenner-Gren Foundation Grants workshop (John Hume Lecture Theatre 1)

### **14:30-16:00 (Workshop session 8)**

W001, W052, W056, W063, W070, W072, W076, W078, W079, W084, W088, W090, W091, W098, W104, W105, W109, W110, W116, W119, W122, W123

### **16:30-18:00**

Members' forum/AGM (John Hume Lecture Theatre 1)

Closing ceremony

### **20:00-**

Conference dinner (Pugin Hall)

### **22:00 – late**

After party (Mantra)

# iliss africa

internet library  
sub-saharan africa



Literature search

Internet resources

Contacts

Events

The scientific information portal  
for African Studies

[www.ilissafrika.de](http://www.ilissafrika.de)

A project run by:

University Library  
Frankfurt am Main  
Africa Department



GIGA Hamburg  
German Institute of Global and Area Studies  
Information Centre: Africa Library



## List of plenaries and workshops

Ref	Title	Convenors	Day	Start time	Location	Workshop sessions
Keynote	Human atrocities, human rights		Tue	17:30	John Hume LTs 1, 2, 3 and 4	
Plen A	Anthropology of warfare, peace and reconciliation	Abdullahi El-Tom (NUIM), Wendy James (Oxford University)	Wed	09:00	John Hume LTs 1, 2, 3 and 4	
Plen B	Economic crisis or the crisis of an imagined economy	Susana Narotzky (Universitat de Barcelona)	Thu	09:00	John Hume LTs 1, 2, 3 and 4	
Plen C	Young Scholars Forum	Dorle Dracklé (University of Bremen), Mark Maguire (National University of Ireland Maynooth)	Fri	09:00	John Hume LTs 1, 2, 3 and 4	
IW001	Class, crisis and anthropology: the place of class in understanding the discipline and the world	James G Carrier (Oxford Brookes ), Don Kalb (Central European University/Utrecht University)	Wed	11:30	John Hume LT 2	1,2,3
IW003	Digital anthropology	Daniel Miller (University College, London), Heather Horst (University of California, Irvine)	Thu	11:30	John Hume LT 2	4,5,6
IW004	Re-imagining Irish ethnography	Andrew Finlay (Trinity College, Dublin), Helena Wulff (Stockholm University)	Thu	14:30	John Hume LT 4	5,6
IW005	Imagination, crisis and hope, or, do futures have a future?	Steve Coleman (National University of Ireland), David Graeber (Goldsmiths College, University of London)	Wed	11:30	John Hume LT 3	1,2,3
IW006	Medical knowledge, health, crises, and processes of diversification	Gabriele Alex (Max Planck Institute of Socio-Cultural Diversity), David Parkin (Oxford University)	Wed	11:30	Arts Theatre 1	1,2,3
IW007	Beyond the biological and the social: anthropology as the study of human becomings	Gisli Pálsson (University of Iceland), Tim Ingold (Aberdeen University)	Thu	11:30	Arts Theatre 1	4,5,6

W001	A new virtue? Imaginaries and regimes of mobility across the globe	Noel B. Salazar (University of Leuven), Pál Nyiri (Vrije Universiteit)	Thu & Fri	16:30	Auxilia AX1	6,7,8
W002	Wounding, meaning, being: managing experience, knowledge and time in contemporary religiosity	Ruy Blanes (University of Lisbon), Keith Egan (National University of Ireland)	Thu	11:30	Arts Classhall A	4,5
W003	Crises, crossings and other worlds: exploring the invisible, the liminal and the virtual	Stuart McLean (University of Minnesota), Rane Willerslev (Århus University), Bruce Kapferer (University of Bergen)	Thu	11:30	Rye Hall LT	4,5,6
W004	Diverse anthropologies with multiple publics: Crisis or imaginative responses? [WCAA workshop]	Andrew 'Mugsy' Spiegel (University of Cape Town), Laurent Bazin (CNRS)	Wed	11:30	Education Theatre	1,2,3
W005	At the margins of Islam in Europe	Martin Sökefeld (Munich University), Marzia Balzani (University of London, Roehampton)	Thu	11:30	John Hume LT 5	4,5,6
W006	Crisis and conflicts in our ranks	Maria Vivod (FRE 3229 Strasbourg France)	Wed	16:30	Humanities Small Seminar Room 2	3
W007	Intermediate categories	João de Pina-Cabral (University of Lisbon), Dominic Boyer (Rice University/Goethe University Frankfurt)	Wed	11:30	Arts Theatre 2	1,2,3
W008	Recasting pasts and futures: imagination and belonging across generations in Europe	Susanna Trnka (University of Auckland), Haldis Haukanes (University of Bergen)	Thu	11:30	JHT4	4,5,6
W010	Food: crisis and creativity	Marta Rosales (New University of Lisbon & CRIA), Monica Janowski (Sussex University)	Wed	11:30	Rowan Room 1	1,2

W011	The imagined Europe under siege	Alexandra Schwell (University of Vienna), Anna Horolets (Warsaw School of Social Sciences and Humanities)	Thu	11:30	JHT7	4,5
W012	Globalisation, crises and imagination in contemporary social movements	Cédric Masse (Instituto de Ciências Sociais da Universidade de Lisboa (ICS-UL), Centro em Rede de Investigação em Antropologia (CRIA), Lisboa, Portugal), Eliane Fernandes Ferreira (Philipps-Universität Marburg)	Wed	11:30	Rowan Room 2	1,2,3
W013	Death and imagination: creative strategies to embrace and avoid the crisis of death	Chiara Garattini (UCD ), John Troyer (University of Bath)	Thu	11:30	JHT5	4,5,6
W014	Spirituality against religion: the role of gender and power	Anna Fedele (CRIA - Lisbon University Institute, GSPM - Ecole des Hautes Etudes en Sciences Sociales, Paris), Kim Knibbe (Vrije Universiteit)	Thu	11:30	Science PCT	4,5,6
W015	The other within the other: creative alternatives in the Balkans and post communist Europe	David Murphy (National University of Ireland), Rajko Mursic (University of Ljubljana)	Wed	11:30	JHT3	1,2
W016	Envisioning the future, and hope	Anselma Gallinat (Newcastle University), Frances Pine (Goldsmiths College, University of London)	Wed	11:30	Rye Hall LT	1,2,3
W017	Out in public: towards an anthropology of public socialities in urban space	Kira Kosnick (Goethe University Frankfurt), Begonya Enguix (Universitat Oberta de Catalunya)	Thu	11:30	Rowan Room 1	4,5,6
W018	Material culture, migration and the transnational imaginary	Julie Botticello (UCL), Ivana Bajic-Hajdukovic (European University Institute, Florence)	Thu	11:30	Auxilia AX2	4,5,6

Crisis and imagination

W019	Crisis, environmental anthropology, and the garden: local resilience, sustainable living and alternative food production	Katy Fox (Aberdeen University), James Veteto (University of North Texas)	Wed	11:30	Arts Classhall E	1,2,3
W020	Crises, imagination, and beyond: bringing aesthetics back into the anthropology of (popular) music	Markus Verne (Bayreuth University), Hauke Dorsch (Universitaet Mainz)	Thu	11:30	Rowan Room 221	4,5,6
W022	Colonial crisis and cross-cultural encounters: Reconfigurations of the social in historical perspective	Patrice Ladwig (Max Planck Institute for Social Anthropology), Ricardo Roque (Institute of Social Sciences, University of Lisbon)	Wed	11:30	Callan SLT	1,2,3
W023	The self as 'mini-corporation'? The fate of neo-liberal models of personhood in the boom (and bust) economies of Central and Eastern Europe	Nicolette Makovicky (Oxford University), Dimitrios Dalakoglou (University of Sussex)	Fri	11:30	JHT2	7
W024	Reproductive tourism: imaginative responses to crises of infertility and health care systems?	Eva-Maria Knoll (Austrian Academy of Sciences), Amy Speier (Eckerd College)	Fri	11:30	Arts Classhall D	7
W025	Rethinking shattered fields: power and belonging in sites of crisis	Claudia Liebelt (University of Bayreuth), Alexander Koensler (University of Perugia)	Thu	11:30	JHT8	4,5
W026	Applied anthropology, crisis and innovation in health and medicine	Rachael Goberman-Hill (University of Bristol), Josiane Carine Tantchou (Bureq)	Wed	11:30	Callan CS2	1,2,3
W027	Indigeneity in western Atlantic intersystems	Huon Wardle (St. Andrews University), Stacy Hope (University of St. Andrews)	Thu	11:30	Arts T7	4
W028	Family dynamics and practical kinship in Africa	Joel Noret (Université Libre de Bruxelles), Benjamin Rubbers (Université de Liège)	Wed	11:30	JHT10	1,2,3
W029	Public celebrations & popular culture in Africa: representations, performances and local appropriations	Dmitri Bondarenko (Institute for African Studies), Peter Skalník (University of Pardubice)	Fri	11:30	JHT7	7

W032	Ethnographies of Catholicism	Anna Niedzwiedz (Jagiellonian University), Ingo Schröder (Max Planck Institute for Social Anthropology)	Wed	11:30	Humanities Large Seminar Room 2	1,2,3
W033	Tobacco and the anthropological imagination	Andrew Russell (Durham University), Roland Moore (Pacific Institute for Research and Evaluation)	Thu	16:30	Arts Classhall A	6
W034	Crisis in church? Religious authority and religious experience	Agnieszka Halemba (University of Leipzig), Richard Irvine (University of Cambridge)	Thu	11:30	Arts Classhall B	4,5,6
W035	Joining phenomenologies and political economies of 'the Global'	Patrick Neveling (University of Bern), Valerio Simoni (Centre for Research in Anthropology (CRIA-IUL), Lisbon)	Thu	11:30	JHT6	4,5,6
W036	Aspiring migrants, local crises, and the imagination of futures 'away from home'	Ellen Bal (VU University Amsterdam)	Wed	11:30	Arts Classhall F	1,2,3
W037	The local in times of change	Malgorzata Rajtar (Max Planck Institute for Social Anthropology), Esther Peperkamp (International University of Applied Sciences Breda)	Thu	11:30	Humanities Large Seminar Room 1	4,5,6
W038	Imagining fish - nature assemblages under water	Marianne Elisabeth Lien (University of Oslo), Gro Ween (University of Oslo)	Wed	11:30	JHT5	1,2,3
W039	Selling tradition by the pound: intangible cultural heritage and the marketing of localities	Cristina Grasseni (University of Bergamo), Letizia Bindi (Università degli Studi del Molise)	Thu	11:30	Arts Classhall D	4,5,6
W041	Global movement: dance, choreography, style	László Kürti (University of Miskolc), Jonathan Skinner (Queen's University Belfast)	Wed	11:30	Arts Classhall A	1,2,3



W042	Engaging anthropology in practice: pedagogical exchanges with media practitioners	Caroline Gatt (Aberdeen University), Rachel Harkness (University of Edinburgh), Thomas Hylland Eriksen (University of Oslo), Joseph Long (Max Planck Institute for Social Anthropology)	Fri	11:30	Arts Classhall E	7
W043	Is after the Crisis before the Crisis? New perspectives on art, media and politics in Turkey	Britta Ohm (University of Bern), Barbara Wolbert (University of Minnesota)	Wed	11:30	John Hume Boardroom	1,2
W044	What are you really doing here? Suspicion and the politics of ethnography	Virtudes Téllez-Delgado (CSIC-UAM), José Mapril (ISCTE-IUL)	Thu	11:30	Arts Classhall E	4,5,6
W045	Methodologies of participation and engagement	Hana Cervinkova (University of Lower Silesia), Pauline Lipman (University of Illinois-Chicago)	Thu	11:30	JHT1	4,5
W046	Imagining disorder, engendering change	Katja Rieck (Goethe University Frankfurt / Main)	Thu	14:30	John Hume Boardroom	5,6
W047	Design anthropology: intertwining different timelines, scales and movements	Wendy Gunn (Mads Clausen Institute), Rachel Charlotte Smith (Aarhus University), Ton Otto (University of Aarhus)	Wed	11:30	John Hume LT 4	1,2,3
W048	Violence, personhood and emotions	Susana Durão (University of Lisbon, Institute of Social Sciences (State Laboratory)), Maria Claudia Coelho (Universidade do Estado do Rio de Janeiro)	Thu	11:30	Callan CS2	4,5,6
W049	Crisis and imag(e) ination: visual studies in and about crisis	Beate Engelbrecht (University of Goettingen), Nadine Wanono (CNRS)	Wed	11:30	Auxilia AX2	1,2,3

W050	Social imagination and urban crisis in postindustrial cities	Corine Vedrine (University of Saint-Etienne), Velislava Petrova (Sofia University), Michel Rautenberg (Université Jean Monnet), Ivaylo Dichev (Sofia University)	Thu	11:30	JHT2	4,5
W051	From the mouth of God: 'the political' from a post-secular perspective	Lucia Michelutti (Oxford university), Alice Forbess (Goldsmiths College, University of London)	Thu	11:30	Education Seminar Room	4,5,6
W052	Making sense together: the role of participants in ethnography	Paul Clough (University of Malta)	Fri	11:30	JHT6	7,8
W053	Shaping urban inequalities: space and power in the city	Rivke Jaffe (Leiden University), Anouk de Koning (University of Amsterdam)	Wed	11:30	JHT6	1,2,3
W054	Understanding Mediterranean transit migration	William Kavanagh (CEU San Pablo University, Madrid), Jutta Lauth Bacas (Academy of Athens)	Wed	11:30	Arts Classhall H	1,2,3
W055	Disease as crisis, health as imagination	Jean-Yves Durand (Universidade do Minho), Maria Cátedra (Universidad Complutense Madrid)	Wed	11:30	Callan CS1	1,2,3
W056	The breast milk problem: cultural considerations when mother's own milk is unavailable	Tanya Cassidy (NUIM)	Fri	11:30	JHT4	7,8
W059	One face, one race? Rethinking race and citizenship in a changing Europe	Dorothy Louise Zinn (Università degli Studi della Basilicata), Heath Cabot (Princeton University (from 01/09/10))	Wed	11:30	Education Seminar Room	1,2,3
W060	Skeletons in the subjunctive: challenges of studying future(s)	Nanna Schneidermann (Aarhus University), Lotte Meinert (Århus University)	Thu	11:30	JHT3	4,5,6

W061	East Asian imaginings: (trans)national scenarios and global crisis	Blai Guarné (Stanford University / Universitat Autònoma de Barcelona), Paul Hansen (SOAS / National Museum of Ethnology Japan)	Wed	11:30	Arts Classhall B	1,2,3
W062	Post-Soviet religion and Russia's economic crises	Detelina Tocheva (Max Planck Institute for Social Anthropology)	Wed	14:30	Humanities Small Seminar Room 2	2
W063	A mysticism for all: conceptions of the individual and conditions for the emergence of neo-evangelical Protestantism	Christophe Pons (CNRS), Virginie Vaté (CNRS)	Fri	11:30	Arts Classhall H	7,8
W064	Thinking about roads, movement, and environment	Tanya Argounova-Low (University of Aberdeen), Gabriel Klaeger (SOAS)	Wed	11:30	JHT1	1,2,3
W065	Stateless ethnic groups in Europe: problems and perspectives	Marketa Vankova (Faculty of Humanities, Charles University in Prague), Ewa Nowicka (University of Warsaw)	Wed	11:30	Humanities Small Seminar Room 2	1
W066	Picturing globalization	Julia Binter (University of Vienna), Roger Canals (University of Barcelona)	Wed	11:30	Rowan Room 221	1,2,3
W067	Memory of crises and traumas: evocations, representations, reclamations in social communication, and cultural creativity	Carole Lemee (Université Bordeaux 2), Vytis Ciubrinskas (Vytautas Magnus University, Kaunas)	Thu	11:30	John Hume LT 6	4,5,6
W068	Media Anthropology network workshop: the rewards of media	John Postill (Sheffield Hallam University), Philipp Budka (University of Vienna)	Wed	11:30	Auxilia AX1	1,2,3
W069	Native Americans in North America: between resistance and adjustment to mainstream society	Sophie Gergaud (Université Paris Ouest La Défense), Celine Planchou (University Paris 7 - Diderot)	Wed	16:30	John Hume Boardroom	3
W070	The right to health: issues of citizenship, power and governance	Ilka Thiessen (Vancouver Island University), Italo Pardo (University of Kent)	Fri	11:30	Callan CS1	7,8

W071	Experience, witnessing, spectacle: performance and commemoration in the new museum	Anja Peleikis (Martin-Luther-University Halle), Jackie Feldman (Ben Gurion University)	Thu	11:30	Auxilia AX1	4,5
W072	Complementary and alternative medicines and biomedicine in chronic diseases: what do we learn from the margins?	Aline Sarradon-Eck (Université Paul Cézanne, Aix-Marseille 3), Patrice Cohen (University of Rouen)	Fri	11:30	Callan CS2	7,8
W074	Why roots?	David Berliner (Université Libre de Bruxelles), Ramon Sarró (University of Lisbon)	Wed	11:30	JHT2	1,2
W075	Engaging resources: anthropological perspectives on the formation and contestation of natural resource environments	Gisa Weszkalnys (University of Exeter), Tanya Richardson (Wilfrid Laurier University)	Thu	11:30	Humanities Large Seminar Room 2	4,5,6
W076	Anthropological reflections on crisis and imagination: a field view	Eswarappa Kasi (University of Hyderabad), Robin Oakley (Dalhousie University)	Fri	11:30	JHT1	7,8
W077	Public anthropology for a world in crisis	Sarah Pink (Loughborough University), Simone Abram (Leeds Metropolitan University), Halvard Vike (University of Oslo)	Thu	11:30	John Hume LT 7	4,5,6
W078	Anthropology of categories in peace and conflict	Regine Penitsch (Max Planck Institute for Social Anthropology), Barbara Karatsioli (EHESS)	Fri	11:30	Arts Classhall B	7,8
W079	Elite groups, crisis and imagination	Kerstin B Andersson (University of Gothenburg), Mattia Fumanti (University of St Andrews)	Fri	11:30	Rowan Room 221	7,8
W081	Crisis, pain and wellbeing: the imagining and bearing of refugee/migrants social, moral and existential crisis	Anne Sigfrid Grønseth (University College of Lillehammer), Janus Oomen (University of Amsterdam)	Wed	11:30	Arts Classhall D	1,2,3

Crisis and imagination

W082	The state in the history of world anthropologies: disciplinary imaginaries at critical moments [AAA CWA panel]	Chandana Mathur (National University of Ireland, Maynooth), Ida Susser (CUNY)	Thu	11:30	John Hume LT 3	4,5,6
W083	Imagining crisis through international intervention	Nina Gren (Göteborg University), Mara Benadusi (University of Catania)	Wed	11:30	John Hume LT 6	1,2,3
W084	Balkan cities, Balkan dreams: exploring the future(s) of the city	Levent Soysal (Kadir Has University, Istanbul)	Fri	11:30	Auxilia AX2	7,8
W086	Ethics in conflict: doing research in conflict areas and the ethical dilemmas that arise	Erella Grassiani (VU University), Nerina Weiss (University of Oslo)	Wed	11:30	JHT7	1,2,3
W087	Water scenarios: forecasting and liquid knowledge	Frida Hastrup (University of Copenhagen), Christian Vium (University of Copenhagen)	Wed	11:30	JHT4	1,2,3
W088	The imagination in times and spaces of crisis: day and night dreaming as forms of creative invention	Iain Edgar (Durham University), Adriënnë Heijnen (Århus University)	Fri	11:30	JHT9	7,8
W089	Gender and identification in patrilinear societies	Sophia Thubauville (Frobenius Institute), Echi Christina Gabbert (Max Planck Institute for Social Anthropology Halle/Saale)	Wed	11:30	JHT9	1,2
W090	A regional crisis of global consequence: conflict and political imagination in the Horn of Africa and its diaspora		Fri	11:30	John Hume LT 5	7,8
W091	Medicating crisis	Fiona Larkan (NUI Maynooth)	Fri	11:30	Arts Classhall C	7,8
W092	Frontiers of 'legality' under neoliberalism: ethnographic explorations across shifting temporal and spatial scales	Filippo M. Zerilli (University of Cagliari), Berardino Palumbo (University of Messina)	Thu	11:30	Arts Classhall H	4,5,6
W093	Lifeworlds of children and youth in times of crisis	Anna Streissler (University of Vienna), Elise Guillermet (IRD)	Wed	11:30	Humanities Large Seminar Room 1	1,2,3

W095	Commodification of indigenous cultures	Dmitry Arzyutov (Peter the Great Museum of Anthropology and Ethnography (Kunstkamera)), Ekaterina Kapustina (Peter the Great Museum of Anthropology and Ethnography (Kunstkamera))	Wed	11:30	Arts Classhall C	1,2,3
W096	Markets, moneys, and mobilities: transnational organizing	Christina Garsten (Stockholm University), A. Jamie Saris (NUI Maynooth), Renita Thedvall (Stockholm University)	Wed	11:30	John Hume LT 7	1,2,3
W098	Chance in time of crisis	Riccardo Ciavolella (CNRS Toulouse/ University of Teramo), Lorenzo D'Angelo (University of Milano-Bicocca)	Fri	11:30	Humanities Large Seminar Room 1	7,8
W099	Crisis of representation: Irish Travellers and Roma	Attracta Brownlee (National University of Ireland)	Thu	11:30	Humanities Small Seminar Room 2	4,5,6
W100	The anthropology of international organizations	Jens Adam (Humboldt University Berlin), Michael Lidauer (Goethe University Frankfurt)	Thu	11:30	Education Theatre	4,5,6
W101	Politics of disability and experience	Benedicte Ingstad (University of Oslo, Norway), Patrick Devlieger (University of Leuven)	Wed	11:30	Science PCT	1,2,3
W102	Negotiating values: care support, solidarity and elderly people	Peter van Eeuwijk (University of Basel), Jana Gerold (University of Basel), Vendelin Simon Tarmo (University of Dar es salaam)	Thu	11:30	JHT9	4,5,6
W103	Sourcing/outsourcing state violence: concealment, legitimacy, sovereignty	Urania Astrinaki (Panteion University), Allen Feldman (New York University), Staffan Löfving (Uppsala University)	Thu	11:30	Callan CS1	4,5,6

Crisis and imagination

W104	Visual representation of crisis through ethnographic film	Susanne Hammacher (Royal Anthropological Institute), Rolf Husmann (IWF Knowledge and Media)	Wed	11:30	Humanities LT	All 8 sessions
W105	Imaginative women: theoretical and methodological contributions of founding grandmothers of European anthropology	Laura Assmuth (University of Helsinki), Marja-Liisa Honkasalo (Inst Medicine and Health)	Fri	11:30	Rowan Room 1	7,8
W106	Crisis and resolution: imagination and the transformation of psychiatric care	Livia Velpry (CESAMES/Université paris 8), Lydie Fialova (Edinburgh University)	Thu	11:30	Arts Classhall C	4,5,6
W107	The expert's voice: marketable discourses on choice and risk management	Alexandra Bakalaki (Aristotle University, Thessaloniki), Venetia Kantsa (University of the Aegean)	Fri	11:30	Humanities Small Seminar Room 2	7
W109	Law in the Caucasus: anthropological perspectives on legal practice	Stephane Voell (University of Marburg), Lavrenti Janiashvili (Iv. Javakhishvili Institute of History and Ethnology)	Fri	11:30	John Hume LT 6	7,8
W110	Observing the 'bad guys': ethnographic approaches to non-state armed groups	Stefan Khittel (OIP - Austrian Institute for Foreign Affairs), Alexander Horstmann (Max-Planck-Institute for Religious and Ethnic Diversity)	Fri	11:30	JHT3	7,8
W111	Immigration, security and surveillance	Catarina Frois (Centre for Research in Anthropology), Nils Zurawski (University of Hamburg)	Fri	11:30	JHT10	7
W112	Transformation of rural communities in Europe: from production to consumption	Hana Horáková (University of Pardubice; Metropolitan University Prague), Andrea Boscoboinik (University of Fribourg)	Wed	11:30	JHT8	1,2,3
W113	Postsocialist Eastern Europe: social transformations and crises in personal biographies	Agnieszka Pasieka (Max Planck Institute for Social Anthropology), Marian Viorel Anastasoiaie (University College, London)	Wed	11:30	John Hume LT 5	1,2,3

W115	In-migration, indigeneity and imagination: or class, community and crisis in Europe	Jeanette Edwards (Manchester University), Gillian Evans (Manchester University), Katherine Smith (University of Surrey)	Thu	11:30	Arts Classhall F	4,5,6
W116	Rites, rights and routes: imaginaries of belonging in a mobile world	Winnie Lem (Trent University)	Fri	11:30	Rowan Room 2	7,8
W117	Law and normative pluralism	Thomas Strong (National University of Ireland Maynooth)	Thu	11:30	John Hume Boardroom	4
W118	Cities	Thaïs Machado-Borges (Institute of Latin American Studies)	Fri	11:30	John Hume Boardroom	7
W119	Indiascapes: reflections of contemporary India	Jonathan Miles-Watson (Tallinn University), Mari Korpela (University of Tampere)	Fri	11:30	JHT8	7,8
W120	Homo technologicus	Dan Podjed (University of Ljubljana)	Thu	11:30	Rowan Room 2	4,5,6
W121	Uncertainties, risk and socio-political change: medical pluralism and diverse agencies	Britta Rutert (Free University of Berlin), Alessia Villanucci (Università degli Studi di Messina)	Thu	11:30	Callan SLT	4,5,6
W122	Migration and materialities of home	Hilje van der Horst (Wageningen University)	Fri	11:30	JHT5	7,8
W123	Ambiguous states of mind and crises in their management: imaginative approaches to the self and emotions in four postindustrial societies	Agita Luse (Riga Stradiņš University)	Fri	11:30	Arts Classhall A	7,8
W125	Imagined resources and governance of community	Ben Campbell (Durham University), Lorenzo Cañas Bottos (Norwegian University of Science and Technology - Tallinn University)	Thu	14:30	JHT10	5,6



---

## Plenary, workshop and paper abstracts

### Opening/keynote address

Tue 25th August, 17:30-18:30

John Hume Lecture Theatres 1, 2, 3 and 4

#### Human atrocities, human rights

*Prof Talal Asad, City University, New York*

In this talk I explore some of the discourses of the U.S. government after the September 11 atrocity (which I witnessed) to initiate its Global War on Terror. I discuss the notion of necessity as applied to the invasion of Afghanistan, and trace the shift in reasons given for justifying that war by the U.S. government and its supporters from self-defense (the dismantling of terror networks) to human rights (the liberation of women, the promotion of elementary education, etc). Although the concepts of war crime and crime against humanity have relatively clear meanings in humanitarian law, the word terror does not. In fact the way that that word is typically used to describe the violence of non-state actors tends to obscure the complexity of the modern state's own use or threat of violence in just war as well as in enhanced interrogation. I examine the political theologies that articulate violence by the United States, and conclude by analyzing the counterinsurgency strategies that have been adopted in Afghanistan by the Obama Administration. I propose that these strategies express a form of cruelty-in-compassion that is quite common in modernity.

### Plenary A

#### Anthropology of warfare, peace and reconciliation

Convenors: Dr Abdullahi El-Tom (NUIM), Prof Wendy James (Oxford University)

Wed 25th Aug, 09:00-11:00

John Hume Lecture Theatres 1, 2, 3 and 4

A Plenary on warfare, peace and reconciliation can scarcely be more pertinent to the theme of the conference "crisis and imagination". For better or for worse, war constitutes a challenging crisis for society, entailing an imaginative realignment of social relations; a process that calls for creativity, and the reconstructing of strategies, mythology, history, identity and culture. The global interconnectedness of the current world, along with the rise of claims to a universal ethos of human rights, has happened against a background of genocides and war crimes, minority consciousness, terrorism, etc. Today's conditions have eroded the space previously

Who's behind the EASA conferences, website, online forms and numerous emails? That's NomadIT: a freelance team combining approachability with technical knowledge, years of experience with purpose-built software, and an ethical stance with low prices.



### **Conference organisation**

Our online conference software takes panel/paper proposals, registrations and funding applications; we design and produce conference websites & books; we draw up budgets, run conference finances, and facilitate online payment; we liaise with institutional conference offices and caterers; we manage volunteers and run the front desk during events ranging from 50 to 1200 delegates.

### **Association administration**

We administer academic associations ranging in size from 200 to 1700 members (e.g. EASA, ASA and SIEF), running Association websites, journals, email lists, finances, online surveys/elections, and online membership directories.

### **Website design**

We also set up affordable websites for individual academics or projects not assisted by an institution. We design and host Open Access online journals.

### **Ethos**

We provide a high level of service at an affordable price, while trying not to compromise our principles about quality of life and the environment. This book is printed on recycled paper, using vegetable-dye inks, and wind-generated energy; we use a green webhost; reuse conference badges and advise clients against the ubiquitous 'conference bag'.

If you are interested in who we are, what we do, and how we might help you, please visit our website, email us, or come and talk to Megan, Rohan, Darren or Eli, at the NomadIT desk near reception.

**E: [rohan@nomadit.co.uk](mailto:rohan@nomadit.co.uk)**

**W: [www.nomadit.co.uk](http://www.nomadit.co.uk)**

# North Campus

# South Campus



- Tea/coffee point
- Food
- Accom. office
- Computer room

North Campus Entrance

South Campus Entrance

Footbridge

Mill Street

Bus stop

M4

Train Station

Kairos

University Village Apartments

River Apartments

Crèche

Rowan House

Auxilia House

John Hume

Humanities

Arts

Callan

Student Restaurant

Sports & Gym

Student Centre

Student Common Room

MAP Lodge

Student Services

Science

Saint Catherine's

Saint Anne's

Education House

John Paul II Library

Columba Centre

Aula Maxima

Computer Centre

St. Mary's

Russell Library

Museum

Loftus Halls

Pool

Rhetoric House

Post

Riverstown Lodge

St. Patrick's College Chapel

St. Joseph's Square

Long Corridor

Stoyte House

New House

Humanity House

Security

Church

Castle

Manor Mills Shopping Centre

Aldi

Killocock Road

Garda Station

Fire Station

**Conference organisers: [NomadIT.co.uk](http://NomadIT.co.uk)**

